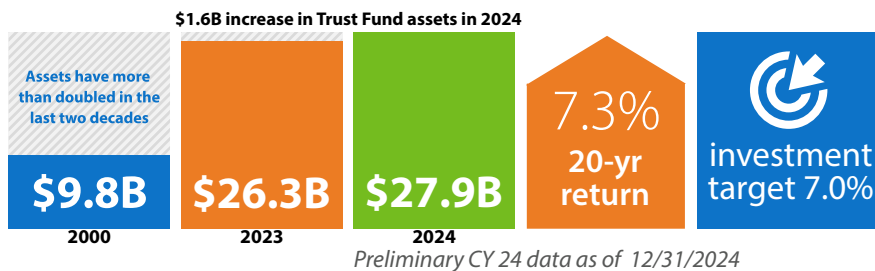


# FAST FACTS

*The fiduciary standard is our guiding principle and driving force. That means we put the interest of our members first in all that we do. It is the highest standard of care and accountability.*

## Growing Assets

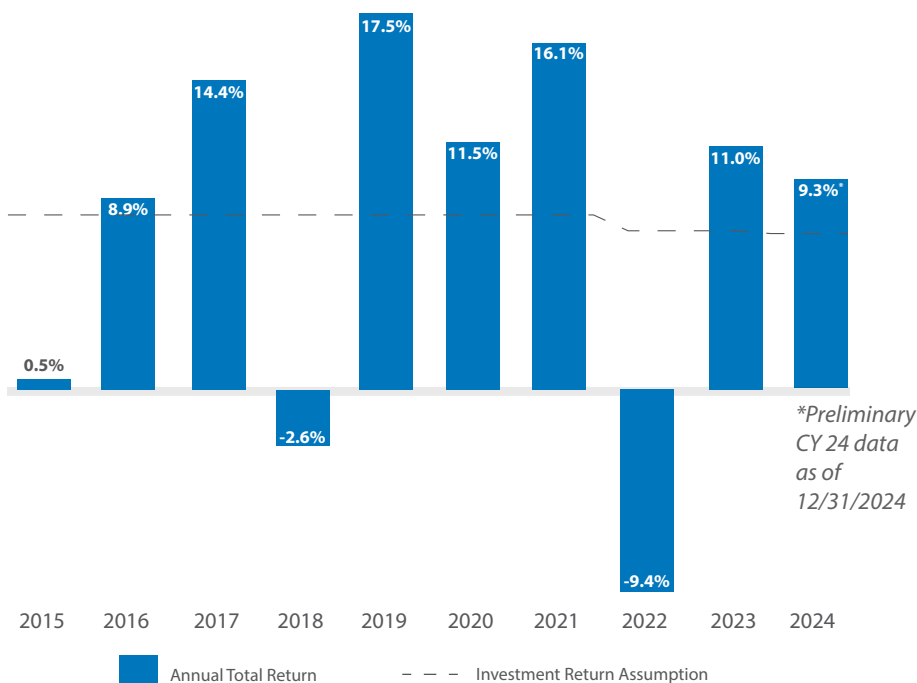


## What Governs Investments?

Kansas Statute & KPERS Policy



## Annual Returns Over Time

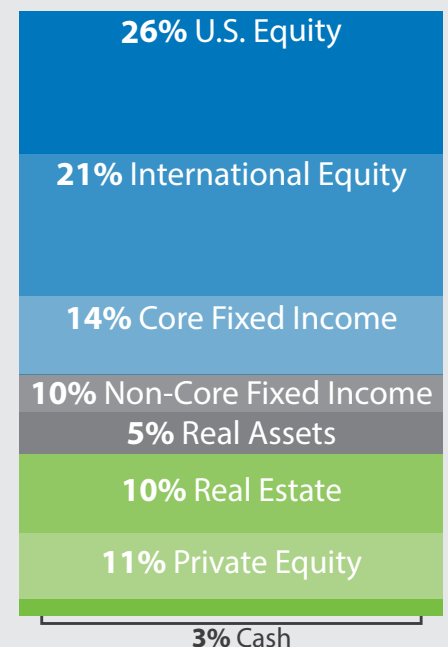


## How KPERS Works



## Diversified Assets

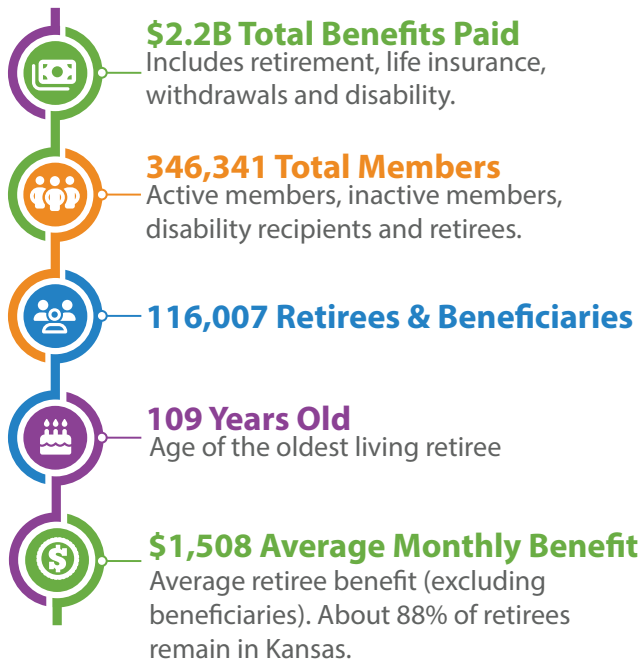
Target Asset Allocation as of 1/1/25



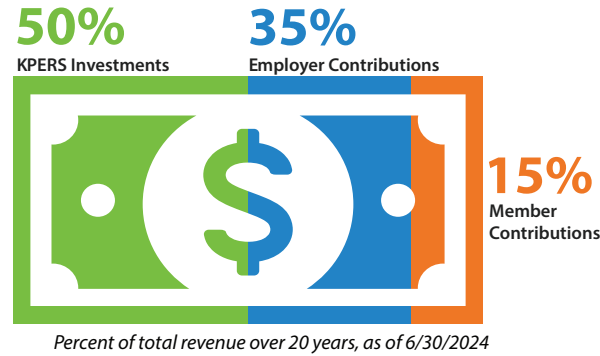
# Our Mission

The Kansas Public Employees Retirement System serves members at state, school and local employers, providing retirement, disability and survivor benefits to members and their beneficiaries.

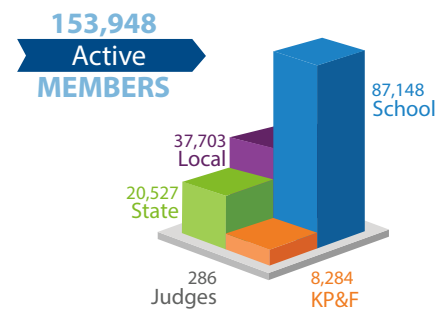
## FY24 by the Numbers



## Revenues by Source



## Total Active Members by Plan



## CY24 Total Retirees by County

Does not include beneficiaries and joint annuitants.

Cheyenne 123	Rawlins 143	Decatur 151	Norton 365	Phillips 285	Smith 174	Jewell 180	Republic 293	Washington 285	Marshall 434	Nemaha 407	Brown 435	Doniphan 288
Sherman 229	Thomas 307	Sheridan 116	Graham 186	Rooks 262	Osborne 185	Mitchell 365	Cloud 435	Clay 390	Riley 2,263	Pottawatomie 947	Jackson 624	Atchison 564
Wallace 85	Logan 185	Gove 185	Trego 144	Ellis 1,289	Russell 371	Lincoln 158	Ottawa 280	Dickinson 889	Geary 810	Wabaunsee 416	Shawnee 9,632	Leavenworth 2,217
Greeley 49	Wichita 73	Scott 150	Lane 85	Ness 153	Rush 184	Ellsworth 321	Saline 1,950	Marion 549	Morris 293	Lyon 1,613	Osage 925	Jefferson 1,077
Hamilton 95	Kearny 160	Finney 889	Hodgeman 79	Pawnee 542	Barton 1,041	Rice 510	Mcpherson 1,187	Chase 147	Coffey 458	Anderson 393	Douglas 4,313	Wyandotte 3,565
Stanton 90	Grant 224	Haskell 111	Gray 186	Edwards 178	Stafford 231	Kingman 320	Reno 2,697	Butler 2,138	Greenwood 331	Woodson 166	Franklin 1,051	Johnson 12,817
Morton 101	Stevens 166	Seward 421	Meade 185	Ford 876	Kiowa 122	Pratt 475	Sedgwick 10,511	Cowley 1,609	Elk 158	Wilson 385	Miami 1,161	Johnson 12,817